

CV216 MZ, CV316 MZ

CONTROL

CONTROL VALVES / 2- AND 3-WAY



CONTROL VALVES WITH ELECTRIC ACTUATORS

Suitable for zone control and room control. Available in dimensions up to DN 25, pressure class PN 16 with external thread connection.



MICROPROCESSOR CONTROLLED

Multifunctional adjustable.



OPTIMIZED CHARACTERISTIC

Long-stroke plug profile for optimized characteristic.



INTERLOCKING CONNECTION

Automatic coupling for 100% push and pull thrust.

we knowhow

TA

CV216 MZ, CV316 MZ

CONTROL

TECHNICAL DESCRIPTION

Application:

Heating and cooling systems

Function:

Control

CV216 MZ: 2-way control valve

CV316 MZ: 3-way mixing or on/off valve

Characteristics:

CV216 MZ: Equal percentage.

CV316 MZ: A-AB equal percentage. B-AB linear.

Dimensions:

DN 15-25

Pressure class:

PN 16

Temperature:

Max. working temperature: 120°C

Min. working temperature: 0°C

Material:

Valve body: Brass

Valve plug: Brass

Stem: Steel CrNi 1.4305

Stem sealing: EPDM O-rings

Marking:

TA, PN, DN and flow direction arrow.

Connection type:

Body with external thread according to ISO 228/1.

Leakage rate:

EN 1349, seat-leakage V L1 (<0,02%)

Max. lift of the control valve:

6.5 mm

Range ability:

≥30:1

Actuator:

MC15/24 or MC15/230

VALVE VARIANTS AND ACCESSORIES

- Male thread connection parts of brass union nuts and gaskets.
- Technical silicon free version.

TECHNICAL DESCRIPTION – MC15

Power supply:

MC15/24: 24V AC/DC ±10%

MC15/230: 230V AC +6% -10%

Frequency 50-60 Hz ±5%

Power consumption:

2,5 VA

Input signal:

MC15/24: DC 0(2)-10 V or 3-point.

MC15/230: 3-point.

Actuating time:

20 s/mm

Actuating thrust:

150 N

Temperature:

Max. ambient temperature: 50°C

Min. ambient temperature: 0°C

Enclosure class:

IP 40

Cable:

1,5 m, 0,5 mm², with wire end ferrule.

Stroke:

9 mm

Colour:

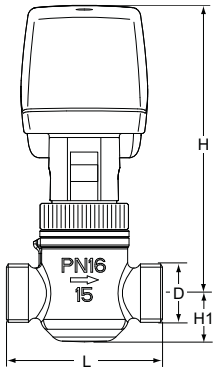
Black body and red cover.

CV216 MZ, CV316 MZ

CONTROL

CV216 MZ – 2-WAY

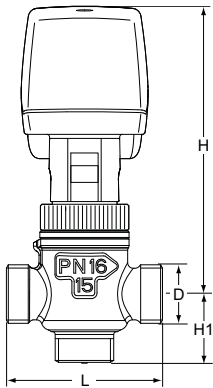
Male threads according to ISO 228



Order Code	DN	D	L	H	H1	Kvs	Kg
60-281-115	15	G1/2	56	110	18	0.25	0.34
60-281-215	15	G1/2	56	110	18	0.40	0.34
60-281-315	15	G1/2	56	110	18	0.63	0.34
60-281-415	15	G1/2	56	110	18	1.0	0.34
60-281-515	15	G1/2	56	110	18	1.6	0.34
60-281-615	15	G1/2	56	110	18	2.5	0.34
60-281-120	20	G3/4	66	115	19	4.0	0.40
60-281-125	25	G1 1/4	76	130	26	6.3	0.70
60-281-225	25	G1 1/4	76	130	26	8.0	0.70

CV316 MZ – 3-WAY

Male threads according to ISO 228



Order Code	DN	D	L	H	H1	Kvs	Kg
60-381-115	15	G1/2	56	110	24.5	0.25	0.35
60-381-215	15	G1/2	56	110	24.5	0.40	0.35
60-381-315	15	G1/2	56	110	24.5	0.63	0.35
60-381-415	15	G1/2	56	110	24.5	1.0	0.35
60-381-515	15	G1/2	56	110	24.5	1.6	0.35
60-381-615	15	G1/2	56	110	24.5	2.5	0.35
60-381-120	20	G3/4	66	115	33	4.0	0.43
60-381-125	25	G1 1/4	76	130	38	6.3	0.75
60-381-225	25	G1 1/4	76	130	38	8.0	0.75

ACTUATORS

Order code	Type	Power supply	Actuating thrust [kN]	Input signal
61-015-001	MC15/24	24 VAC/DC	0,15	3-point, 0(2)-10 V
61-015-002	MC15/230	230 VAC	0,15	3-point

CV216 MZ, CV316 MZ

CONTROL

TECHNICAL DATA VALVE WITH ACTUATOR

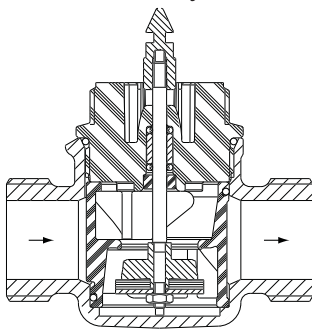
CV216 MZ / CV316 MZ

DN		15						20	25	
Kvs-value	m³/h	0,25	0,4	0,63	1,0	1,6	2,5	4,0	6,3	8,0
Stroke	mm	6,5								
MC15/24	Actuating time	130								
MC15/230	Closing pressure	kPa	600	600	600	600	300	300	300	150
			600	600	600	300	300	300	150	150

OPERATING FUNCTION

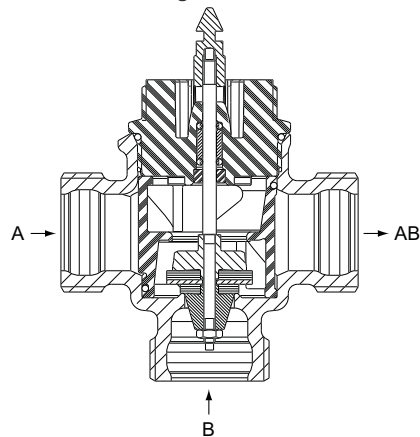
CV216 MZ

Work as a two-way valve.



CV316 MZ

Work as a mixing valve.



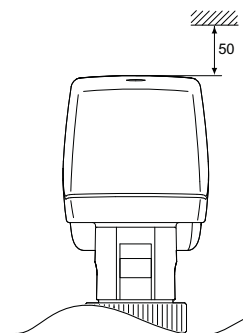
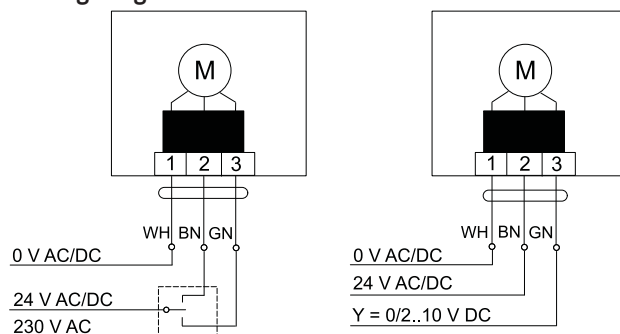
INSTALLATION

Valve trim could be damaged by dirt in the pipe system. Installation of strainers are recommended.

Application example:

Optimal for zone and room regulation.

Wiring diagram:



The products, texts, photographs, graphics and diagrams in this brochure may be subject to alteration without prior notice or reasons being given.

3-30-10 CV216 MZ, CV316 MZ 2009.10

we knowhow

TA